

MASTER OF PUBLIC ADMINISTRATION PROGRAM

WHAT IS AN MPA?

AL COLLEGE OF COMMUNITY AND PUBLIC AFFAIRS
BINGHAMTON UNIVERSITY
BINGHAMTON, NY 13902-6000
TEL: 607/785-2000
WWW.BINGHAMTON.EDU

HOW WILL AN MPA DEGREE HELP ME IN MY CAREER?

AL COLLEGE OF COMMUNITY AND PUBLIC AFFAIRS
BINGHAMTON UNIVERSITY
BINGHAMTON, NY 13902-6000
TEL: 607/785-2000
WWW.BINGHAMTON.EDU

- Gain practical experience through internships
- Develop leadership and management skills
- Build a professional network
- Enhance your resume

WHY BINGHAMTON?

AL COLLEGE OF COMMUNITY AND PUBLIC AFFAIRS
BINGHAMTON UNIVERSITY
BINGHAMTON, NY 13902-6000
TEL: 607/785-2000
WWW.BINGHAMTON.EDU

AL COLLEGE OF COMMUNITY AND PUBLIC AFFAIRS
BINGHAMTON UNIVERSITY
BINGHAMTON, NY 13902-6000
TEL: 607/785-2000
WWW.BINGHAMTON.EDU

AL COLLEGE OF COMMUNITY AND PUBLIC AFFAIRS
BINGHAMTON UNIVERSITY
BINGHAMTON, NY 13902-6000
TEL: 607/785-2000
WWW.BINGHAMTON.EDU

AL COLLEGE OF COMMUNITY AND PUBLIC AFFAIRS
BINGHAMTON UNIVERSITY
BINGHAMTON, NY 13902-6000
TEL: 607/785-2000
WWW.BINGHAMTON.EDU

FULL OR PART TIME: THE OPTION IS YOURS

Whether you're looking to advance your career or gain new skills, you can choose to study full or part time. The program is designed to be flexible, allowing you to fit your studies around your work and personal commitments.

FOR WORKING PROFESSIONALS

The MPA program is specifically designed for working professionals. It offers a flexible schedule with evening and weekend classes, allowing you to continue your career while earning your degree. The program also provides networking opportunities and practical experience through internships and projects.

MPA DEGREE REQUIREMENTS

Core Courses	12 credits
Electives	12 credits
Administrative Services (AS) or Leadership (L) or Administration (A) or Sustainable Communities (SC)	12 credits
Capstone (CAI)	42 credits

DESIGN YOUR DEGREE

The MPA program offers several specializations, allowing you to tailor your degree to your interests and career goals. The specializations include Genocide and Mass Atrocity Prevention, Local Government Management and Leadership, Nonprofit Management and Leadership, and Sustainable Communities (specialization).

- Genocide and Mass Atrocity Prevention
- Local Government Management and Leadership
- Nonprofit Management and Leadership
- Sustainable Communities (specialization)

Each specialization provides a unique set of courses and experiences. For example, the Sustainable Communities specialization focuses on addressing social and environmental issues through community development and policy analysis. The Nonprofit Management and Leadership specialization prepares students for careers in the nonprofit sector, covering topics such as organizational management, fundraising, and public relations.

The program also offers a variety of elective courses, allowing students to explore areas of interest outside their specialization. Electives can include courses in public policy, urban planning, and international development. The capstone course (CAI) is a required final project that allows students to apply their knowledge and skills to a real-world problem.

DUAL AND DOUBLE DEGREE PROGRAMS

Students can pursue dual or double degree programs, allowing them to earn two degrees in a shorter amount of time. These programs are designed for students who are interested in multiple fields of study and want to maximize their educational investment.

- Master of Social Work and MPA
- Master of Student Affairs Administration and MPA
- Master of Sustainable Communities and MPA
- Master of Systems Science and Industrial Engineering and MPA

ACCELERATED PROGRAMS

Accelerated programs allow students to complete their MPA degree in a shorter amount of time than the standard program. These programs are designed for students who have completed relevant coursework in their undergraduate degree or have prior professional experience in the field.

TAKE A COURSE OR TWO

Students can take individual MPA courses as part of their undergraduate or graduate program. This allows students to gain valuable knowledge and skills in public management and leadership without committing to a full degree program.

INTERNSHIPS

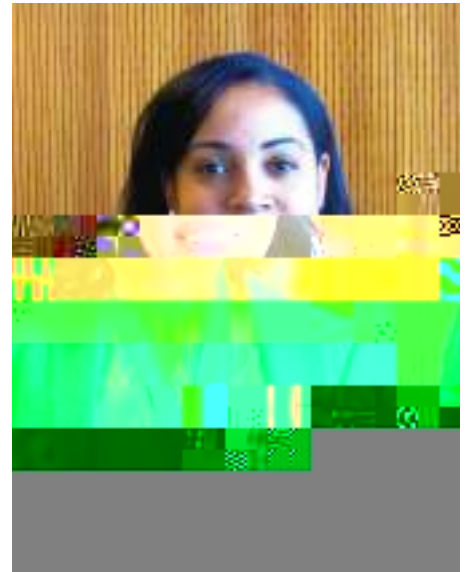
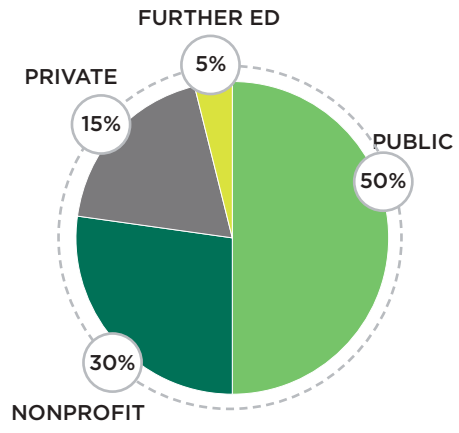
The MPA program offers a variety of internship opportunities, allowing students to gain practical experience in their field of study. Internships are available in a wide range of settings, including government agencies, nonprofit organizations, and private industry. These experiences provide students with valuable insights into the public sector and help them develop the skills and networks needed for a successful career.

OUR MPA ALUMNI

... L.A. ...



MPA ALUMNI BY SECTOR



... M.A. ...

Q '14,

H x



HOW TO APPLY

ADMISSIONS REQUIREMENTS

All applicants must have a minimum 3.0 GPA in their undergraduate studies. Applicants with a GPA below 3.0 may be considered on a case-by-case basis. For more information, contact the Office of Graduate Admissions at gradschool@binghamton.edu.

APPLYING TO THE MPA PROGRAM

Fall application deadline: December 1, 2023
Applications are accepted on a rolling basis. For more information, contact the Office of Graduate Admissions at gradschool@binghamton.edu.

Spring application deadline: May 1, 2024
Applications are accepted on a rolling basis. For more information, contact the Office of Graduate Admissions at gradschool@binghamton.edu.

QUICK APPLICATION CHECKLIST

- Complete the online application form.
- Submit your transcripts from all undergraduate institutions.
- Submit your GRE scores (if applicable).
- Submit your resume.
- Submit your letters of recommendation.
- Submit your statement of purpose.

INTERNATIONAL APPLICANTS:

- Complete the online application form.
 - Submit your transcripts from all undergraduate institutions.
 - Submit your GRE scores (if applicable).
 - Submit your resume.
 - Submit your letters of recommendation.
 - Submit your statement of purpose.
 - Submit your financial statement.
- For more information, contact the Office of Graduate Admissions at [binghamton.edu/grad-school/apply](mailto:gradschool@binghamton.edu).

COSTS AND FINANCIAL AID

The MPA program is a full-time program. Tuition and fees are approximately \$1,200 per semester. There are also room and board costs. Financial aid is available for qualified students. For more information, contact the Office of Graduate Admissions at gradschool@binghamton.edu.

For more information, contact the Office of Graduate Admissions at gradschool@binghamton.edu.

QUESTIONS? CONTACT US

Office of Graduate Admissions
gradschool@binghamton.edu



UNIV B
BINGHAMTON UNIVERSITY